

METER

G3 DRAIN GAUGE INTEGRATOR GUIDE

SENSOR DESCRIPTION

The G3 Drain Gauge is designed for long-term monitoring of soil water drainage to observe soil water movement and chemical leaching accurately and affordably. The G3 Drain Gauge also has a collection system that allows for rapid sampling of drainage waters and for constant water level, temperature, and EC monitoring using a modified HYDROS 21 sensor.

For a more detailed description of how this gauge operates, refer to the [G3 Drain Gauge User Manual](#).

APPLICATIONS

- Aquifer recharge and recovery
- Saltwater intrusion, desalination, and wastewater
- Wetland monitoring
- Groundwater contamination monitoring
- Surface water monitoring

ADVANTAGES

- Precision pressure transducer for water depth measurements
- Accurate 4-probe EC measurement
- Robust thermistor for accurate temperature measurements
- Differential pressure measurement referenced to atmospheric pressure so no external pressure sensor is needed
- Robust marine-grade epoxy encapsulation to resist corrosive environments
- Three-wire sensor interface: power, ground, and data
- Digital sensor communicates multiple measurements over a serial interface
- Low-input voltage requirements
- Low-power design supports battery-operated data loggers
- Supports SDI-12 or DDI Serial communications protocols
- Modern design optimized for low-cost sensing



Figure 1 Modified HYDROS 21 sensor for G3 Drain Gauge

PURPOSE OF THIS GUIDE

METER provides the information in this integrator guide to help G3 Drain Gauge customers establish communication between these sensors and their data acquisition equipment or field data loggers. Customers using data loggers that support SDI-12 sensor communications should consult the data logger user manual. METER sensors are fully integrated into the METER system of plug-and-play sensors, cellular-enabled data loggers, and data analysis software.

COMPATIBLE FIRMWARE VERSIONS

This guide is compatible with firmware versions 5.03 or newer for the G3 Drain Gauge.

SPECIFICATIONS

MEASUREMENT SPECIFICATIONS

Drainage		Temperature	
Range	0–61 mm bottom of wick 61–100 mm top of reservoir chambers	Range	–40 to +60 °C
Resolution	0.2 mm	Resolution	0.1 °C
Accuracy	±1.4 mm	Accuracy	±1 °C
Water Depth		Bulk Electrical Conductivity (EC)	
Range	0–10,000 mm	Range	0–120,000 µS/cm
Resolution	1 mm	Resolution	1 µS/cm
Accuracy	±0.25% of full scale at 20 °C	Accuracy	±10 µS/cm or ±10%, whichever is greater
NOTE: Depth measurement accuracy assumes no abrupt temperature variations.		NOTE: The EC measurement is corrected to a standard temperature of 25 °C.	

COMMUNICATION SPECIFICATIONS

Output	Data Logger Compatibility
DDI Serial or SDI-12 communications protocol	METER ZL6 data loggers and any data acquisition system capable of 4.0- to 15-VDC power and serial or SDI-12 communication

PHYSICAL SPECIFICATIONS

G3 Drain Gauge Dimensions		Sensor Dimensions	
Mass	20.0 kg (44.0 lb) with stainless steel DCT 14.0 kg (31.0 lb) with PVC DCT	Length	9.0 cm (3.5 in)
DCT Dimensions		Diameter	3.4 cm (1.3 in)
Length	62.5 cm (24.6 in)	Sampling Tube Dimensions	
Inner Diameter	25.4 cm (10.0 in)	Length	5.0 m (196.9 in) standard, custom lengths available
Outer Diameter	26.4 cm (10.4 in)	Outer Diameter	6.0 m (0.5 in)
Width	3.3 cm (1.3 in)	Material	Polyethylene
Reservoir Dimensions		Operating Temperature Range	
Length	180.0 cm (70.9 in) standard, custom lengths available	Minimum	0 °C
Outer Diameter	6.0 cm (2.4 in)	Maximum	60 °C
Access Tube Dimensions		NOTE: The pressure transducer will be damaged or destroyed if frozen in ice. No damage will occur at subfreezing temperatures if the sensor is not in water. Contact Customer Support for assistance.	
Length	81.3 cm (32.0 in)	Cable Length	
Outer Diameter	11.5 cm (4.5 in)	10 m (standard) 20 m 40 m (maximum)	
Material	Schedule 40 PVC		

G3 DRAIN GAUGE

Cable Diameter	Connector Diameter
4.20 mm (0.165 in) with a minimum jacket of 0.76 mm (0.030 in)	3.50 mm
Connector Type	Conductor Gauge
Stereo plug connector or stripped and tinned wires	22-AWG / 24-AWG drain wire

ELECTRICAL AND TIMING CHARACTERISTICS

Supply Voltage (power to ground)	Current Drain (while asleep)
Minimum 4.0 V	Minimum NA
Typical NA	Typical 0.35 mA
Maximum 15.0 V	Maximum NA
Digital Input Voltage (logic high)	Power Up Time (DDI Serial)
Minimum 2.8 V	Minimum 52 ms
Typical 3.6 V	Typical NA
Maximum 5.0 V	Maximum 100 ms
Digital Input Voltage (logic low)	Power Up Time (SDI-12)
Minimum -0.3 V	Minimum NA
Typical 0.0 V	Typical 700 ms
Maximum 0.8 V	Maximum 750 ms
Digital Output Voltage (logic high)	Power Up Time (SDI-12, DDI Serial disabled)
Minimum NA	Minimum NA
Typical 3.6 V	Typical 175 ms
Maximum NA	Maximum 200 ms
Power Line Slew Rate	Measurement Duration
Minimum 1.0 V/ms	Minimum NA
Typical NA	Typical 450 ms
Maximum NA	Maximum 600 ms
Current Drain (during measurement)	COMPLIANCE
Minimum 2.5 mA	Manufactured under ISO 9001:2015
Typical 3.5 mA	EM ISO/IEC 17050:2010 (CE Mark)
Maximum 8.0 mA	

EQUIVALENT CIRCUIT AND CONNECTION TYPES

Refer to [Figure 2](#) and [Figure 3](#) to connect the G3 Drain Gauge to a data logger. [Figure 2](#) provides a low-impedance variant of the recommended SDI-12 specification.

G3 DRAIN GAUGE

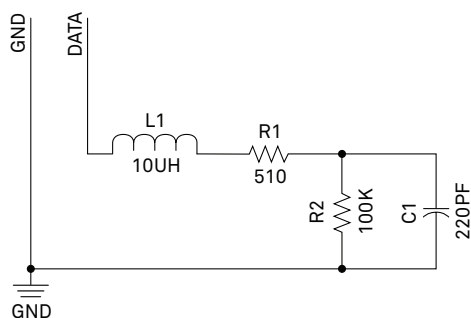
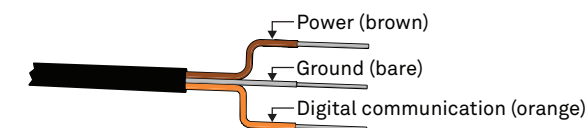


Figure 2 Equivalent circuit diagram

PIGTAIL CABLE



STEREO CABLE

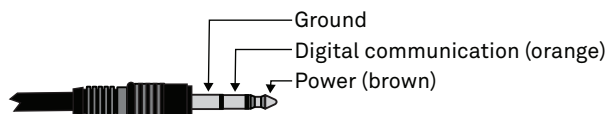


Figure 3 Connection types

⚠ PRECAUTION

METER sensors are built to the highest standards, but misuse, improper protection, or improper installation may damage the sensor and possibly void the manufacturer's warranty. Before integrating G3 Drain Gauge into a system, make sure to follow the recommended installation instructions and have the proper protections in place to safeguard sensors from damage.

SURGE CONDITIONS

Sensors have built-in circuitry that protects them against common surge conditions. Installations in lightning-prone areas, however, require special precautions, especially when sensors are connected to a well-grounded third-party logger.

Read the application note [Lightning surge and grounding practices](#) on the METER website for more information.

POWER AND GROUNDING

Ensure there is sufficient power to simultaneously support the maximum sensor current drain for all the sensors on the bus. The sensor protection circuitry may be insufficient if the data logger is improperly powered or grounded. Refer to the data logger installation instructions. Improper grounding may affect the sensor output as well as sensor performance.

Read the application note [Lightning surge and grounding practices](#) on the METER website for more information.

CABLES

Improperly protected cables can lead to severed cables or disconnected sensors. Cabling issues can be caused by many factors, including rodent damage, driving over sensor cables, tripping over the cable, not leaving enough cable slack during installation, or poor sensor wiring connections. To relieve strain on the connections and prevent loose cabling from being inadvertently snagged, gather and secure the cable travelling between the G3 Drain Gauge and the data acquisition device to the mounting mast in one or more places. Install cables in conduit or plastic cladding when near the ground to avoid rodent damage. Tie excess cable to the data logger mast to ensure cable weight does not cause sensor to unplug.

The G3 Drain Gauge cable has an integrated vent tube to provide an atmospheric pressure reference for the depth sensor. The cable should be installed without sharp bends that would crimp this internal vent tube. Please see the [G3 Drain Gauge User Manual](#) (publications.metergroup.com/Manuals/20677_G3_Drain_Gauge_Manual_Web.pdf) for more information on sensor installation and protecting this vent.

SENSOR COMMUNICATIONS

METER digital sensors feature a serial interface with shared receive and transmit signals for communicating sensor measurements on the data wire (Figure 3). The sensor supports two different protocols: SDI-12 and DDI Serial. Each protocol has implementation advantages and challenges. Please contact [Customer Support](#) if the protocol choice for the desired application is not obvious.

SDI-12 INTRODUCTION

SDI-12 is a standards-based protocol for interfacing sensors to data loggers and data acquisition equipment. Multiple sensors with unique addresses can share a common 3-wire bus (power, ground, and data). Two-way communication between the sensor and logger is possible by sharing the data line for transmit and receive

as defined by the standard. Sensor measurements are triggered by protocol command. The SDI-12 protocol requires a unique alphanumeric sensor address for each sensor on the bus so that a data logger can send commands to and receive readings from specific sensors.

Download the [SDI-12 Specification v1.3](#) to learn more about the SDI-12 protocol.

DDI SERIAL INTRODUCTION

The DDI Serial protocol is the method used by the METER data loggers for collecting data from the sensor. This protocol uses the data line configured to transmit data from the sensor to the receiver only (simplex). Typically, the receive side is a microprocessor UART or a general-purpose I/O pin using a bitbang method to receive data. Sensor measurements are triggered by applying power to the sensor.

INTERFACING THE SENSOR TO A COMPUTER

The serial signals and protocols supported by the sensor require some type of interface hardware to be compatible with the serial port found on most computers (or USB-to-serial adapters). There are several SDI-12 interface adapters available in the marketplace; however, METER has not tested any of these interfaces and cannot make a recommendation as to which adapters work with METER sensors. METER data loggers and the ZSC and PROCHECK handheld devices can operate as a computer-to-sensor interface for making on-demand sensor measurements. For more information, please contact [Customer Support](#).

METER SDI-12 IMPLEMENTATION

METER sensors use a low-impedance variant of the SDI-12 standard sensor circuit ([Figure 2](#)). During the power-up time, sensors output some sensor diagnostic information and should not be communicated with until the power-up time has passed. After the power-up time, the sensors are fully compatible with all commands listed in the [SDI-12 Specification v1.3](#) except for the continuous measurement commands ([aR3](#) and [aRC3](#)). See [page 7](#) for [M](#), [R](#), and [C](#) command implementations.

Out of the factory, all METER sensors start with SDI-12 address 0 and print out the DDI Serial startup string during the power-up time. This can be interpreted by non-METER SDI-12 sensors as a pseudo-break condition followed by a random series of bits.

The G3 Drain Gauge will omit the DDI Serial startup string when the SDI-12 address is nonzero or if `<suppressionState>` is set to 1. Changing the address to a nonzero address is recommended for this reason.

SENSOR BUS CONSIDERATIONS

SDI-12 sensor buses require regular checking, sensor upkeep, and sensor troubleshooting. If one sensor goes down, that may take down the whole bus even if the remaining sensors are functioning normally. Power cycling the SDI-12 bus when a sensor is failing is acceptable, but METER does not recommend scheduling power cycling events on an SDI-12 bus more than once or twice per day. Many factors influence the effectiveness of the bus configuration. Visit metergroup.com for articles and virtual seminars containing more information.

SENSOR ERROR CODES

The G3 Drain Gauge has four error codes:

- [-9999](#) is output in place of the measured value if the sensor detects that the measurement function has been compromised and the subsequent measurement values have no meaning.
- [-9992](#) is output in place of the measured value if the sensor detects corrupt or lost calibrations.
- [-9991](#) is output in place of the measured value if the sensor detects insufficient voltage to perform the measurement.
- [-9990](#) is output in place of the measured valve if the sensor measurement is out of range.

SDI-12 CONFIGURATION

Table 1 lists the SDI-12 communication configuration.

Table 1 SDI-12 communication configuration

Baud Rate	1,200 bps
Start Bits	1
Data Bits	7 (LSB first)
Parity Bits	1 (even)
Stop Bits	1
Logic	Inverted (active low)

SDI-12 TIMING

All SDI-12 commands and responses must adhere to the format in Figure 4 on the data line. Both the command and response are preceded by an address and terminated by a carriage return and line feed combination (<CR><LF>) and follow the timing shown in Figure 5.

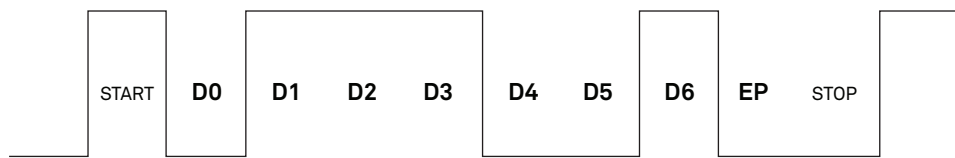


Figure 4 Example SDI-12 transmission of the character 1 (0x31)

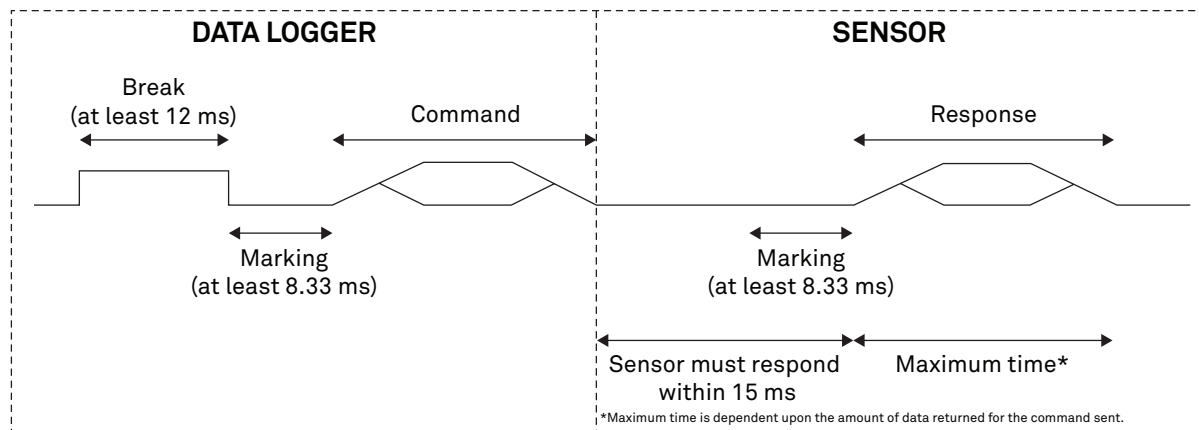


Figure 5 Example data logger and sensor communication

COMMON SDI-12 COMMANDS

This section includes tables of common SDI-12 commands that are often used in an SDI-12 system and the corresponding responses from METER sensors.

IDENTIFICATION COMMAND (**aI!**)

The Identification command can be used to obtain a variety of detailed information about the connected sensor. An example of the command and response is shown in Example 1, where the command is in **bold** and the response follows the command.

Example 1 1I!113METER_ _ _CTD+DG389631800001

Parameter	Fixed Character Length	Description
1I!	3	Data logger command. Request to the sensor for information from sensor address 1.
1	1	Sensor address. Prepended on all responses, this indicates which sensor on the bus is returning the following information.
13	2	Indicates that the target sensor supports SDI-12 Specification v1.3 .
METER_ _ _	8	Vendor identification string. (METER and three spaces _ _ _)
CTD+DG	6	Sensor model string. This string is specific to the sensor type. For G3 Drain Gauge, the string is CTD+DG.
500	3	Sensor version. This number divided by 100 is the METER sensor version (e.g., 500 is version 5.00).
631800001	≤13, variable	Sensor serial number. This is a variable length field. It may be omitted for older sensors.

CHANGE ADDRESS COMMAND (aAB!)

The Change Address command is used to change the sensor address to a new address. All other commands support the wildcard character as the target sensor address except for this command. All METER sensors have a default address of 0 (zero) out of the factory. Supported addresses are alphanumeric (i.e., a–z, A–Z, and 0–9). An example output from a METER sensor is shown in [Example 2](#), where the command is in **bold** and the response follows the command.

Example 2 1A0!0

Parameter	Fixed Character Length	Description
1A0!	4	Data logger command. Request to the sensor to change its address from 1 to a new address of 0.
0	1	New sensor address. For all subsequent commands, this new address will be used by the target sensor.

ADDRESS QUERY COMMAND (?!)

While disconnected from a bus, the Address Query command can be used to determine which sensors are currently being communicated with. Sending this command over a bus will cause a bus contention where all the sensors will respond simultaneously and corrupt the data line. This command is helpful when trying to isolate a failed sensor. [Example 3](#) shows an example of the command and response, where the command is in **bold** and the response follows the command. The question mark (?) is a wildcard character that can be used in place of the address with any command except the Change Address command.

Example 3 ?!0

Parameter	Fixed Character Length	Description
?!	2	Data logger command. Request for a response from any sensor listening on the data line.
0	1	Sensor address. Returns the sensor address to the currently connected sensor.

COMMAND IMPLEMENTATION

The following tables list the relevant Measurement (M), Continuous (R), and Concurrent (C) commands and subsequent Data (D) commands, when necessary.

NOTE: SDI-12 commands MC, CC, and RC that request the sensor response include cyclical redundancy check characters may also be used.

MEASUREMENT COMMANDS IMPLEMENTATION

Measurement (M) commands are sent to a single sensor on the SDI-12 bus and require that subsequent Data (D) commands are sent to that sensor to retrieve the sensor output data before initiating communication with another sensor on the bus.

Please refer to [Table 2](#) and for an explanation of the command sequence and to [Table 9](#) for an explanation of response parameters.

Table 2 **aM!** command sequence

Command	Response
aM!	atttn
aD0!	a±<depth>±<temperature>+<electricalConductivity>

NOTE: The measurement and corresponding data commands are intended to be used back to back. After a measurement command is processed by the sensor, a service request a <CR><LF> is sent from the sensor signaling the measurement is ready. Either wait until **ttt** seconds have passed or wait until the service request is received before sending the data commands. See the [SDI-12 Specifications v1.3](#) document for more information.

CONCURRENT MEASUREMENT COMMANDS IMPLEMENTATION

Concurrent Measurement (C) commands are typically used with sensors connected to a bus. This sensor supports the Concurrent Measurement command; however, the implementation is not fully compliant with the SDI-12 specification for Concurrent Measurement commands. It is not possible for a recorder to interrupt a Concurrent Measurement command by issuing a second command to this sensor during the time the sensor is making a measurement (**ttt**). This sensor will only respond to further commands after the specified amount of time detailed in the **C** command response. The recorder is free to send commands to other sensors during the time the sensor is making measurements.

Please refer to [Table 3](#) for an explanation of the command sequence and to [Table 9](#) for an explanation of response parameters.

Table 3 **aC!** measurement command sequence

Command	Response
aC!	atttnn
aD0!	a±<depth>±<temperature>+<electricalConductivity>

NOTE: Please see the [SDI-12 Specifications v1.3](#) document for more information.

VERIFICATION MEASUREMENT COMMAND IMPLEMENTATION

The Verification (V) command is intended to give users a means to determine information about the current state of the sensor. First, the **V** command is sent followed by **D** commands to read the response.

Table 4 **aV!** measurement command sequence

Command	Response
aV!	atttnn
aD0!	a±<meta>

EXTENDED COMMANDS IMPLEMENTATIONS

Extended (X) command provides sensors with a means of performing manufacturer-specific functions. Additionally, **X** commands are utilized by METER systems and use a different response format than standard SDI-12 commands. **X** commands are required to be prefixed with the address and terminated with an exclamation point. Responses are required to be prefixed with the address and terminated with <CR><LF>.

METER implements the following **X** commands:

- **aXRx!** to trigger a sensor measurement and return the data automatically after the readings are completed without needing to send additional commands.
- **aX0!** (capital O as in Oscar) to suppress the DDI Serialstring.

G3 DRAIN GAUGE

Please refer to [Table 5](#) and [Table 6](#) for an explanation of the command sequence and [Table 9](#) for an explanation of response parameters.

Table 5 G3 Drain Gauge aX0! measurement command sequence

Command	Response
aX0!	a<suppressionState>
aX0<suppressionState>!	a0K

NOTE: Command uses capital O as in Oscar (not zero).

Table 6 G3 Drain Gauge aXR3! measurement command sequence

Command	Response
aXR3!	a<TAB><depth> <temperature> <electricalConductivity><CR><sensorType><Checksum><CRC>

CONTINUOUS MEASUREMENT COMMANDS IMPLEMENTATION

Continuous (R) measurement commands trigger a sensor measurement and return the data automatically after the readings are completed without needing to send a D command. This sensor is not compliant with SDI-12 specification requiring the sensor to respond within 15 ms to a Continuous (R) command. This sensor will respond after the measurement duration (see [Electrical and Timing Characteristics](#)). Use of the Continuous (R) commands with this sensor is deprecated and may not be supported in future versions of the sensor. Please see the Extended Read (XR) command as the preferred single-command measurement.

Please refer to [Table 7](#) and [Table 8](#) for an explanation of the command sequence and see [Table 9](#) for an explanation of response parameters.

Table 7 G3 Drain Gauge aR0! measurement command sequence

Command	Response
aR0!	a±<depth>±<temperature>+<electricalConductivity>

NOTE: This command does not adhere to the SDI-12 response timing. See [METER SDI-12 Implementation](#) for more information.

Table 8 G3 Drain Gauge aR3! measurement command sequence

Command	Response
aR3!	a<TAB><depth> <temperature> <electricalConductivity> <meta><CR><sensorType><Checksum><CRC>

NOTE: This command does not adhere to the SDI-12 response format or timing. See [METER SDI-12 Implementation](#) for more information. The values in this command are space delimited. As such, a + sign is not assigned between values and a - sign is only present if the value is negative.

PARAMETERS

[Table 9](#) lists the parameters, unit measurement, and a description of the parameters returned in command responses for G3 Drain Gauge.

Table 9 Parameter Descriptions

Parameter	Unit	Description
±	—	Positive or negative sign denoting sign of the next value
a	—	SDI-12 address
n	—	Number of measurements (fixed width of 1)
nn	—	Number of measurements with leading zero if necessary (fixed width of 2)
ttt	s	Maximum time measurement will take (fixed width of 3)
<TAB>	—	Tab character

Table 9 Parameter Descriptions (continued)

Parameter	Unit	Description
<CR>	—	Carriage return character
<LF>	—	Line feed character
<electricalConductivity>	μS/cm	Electrical conductivity
<depth>	mm	Depth—Values will typically range from 0 to 4,000 mm
<temperature>	°C	Temperature
<sensorType>	—	ASCII character denoting the sensor type For G3 Drain Gauge, the character is <code>e</code>
<meta>	—	Auxilliary sensor information See Table 10
<suppressionState>	—	0: DDI Serialunsuppressed 1: DDI Serialsuppressed
<CRC>	—	METER 6-bit CRC
<Checksum>	—	METER serial checksum

SENSOR METADATA VALUE

The sensor metadata value contains information to help alert users to sensor-identified conditions that may compromise optimal sensor operation. The output of the `av! ad0!` sequence will output a `<meta>` integer value. This integer represents a binary bitfield, with each individual bit representing an error flag.

[Table 10](#) lists the possible error flags that can be set by the G3 Drain Gauge. If multiple error flags are set, the sensor metadata integer value will be the sum of the individual values. To decode an integer value not explicitly in [Table 10](#), find the largest error flag value that will fit in the integer value and accept that error as being present. Then, subtract that error flag value from the integer value and repeat the process on the remainder until the result is zero. For example, a sensor metadata integer value of 129 is the sum of the individual error flag values 128 + 1, so this sensor has corrupt firmware and experienced temperatures below freezing.

Table 10 Error Flag Values and Issue Resolution

Error Flag Value	Issue Present	Resolution
1	Sensor has experienced temperatures below freezing	Contact Customer Support to replace sensors
128	Sensor firmware is corrupt	Contact Customer Support for instructions on reloading firmware

DDI SERIAL COMMUNICATION

The DDI Serial communications protocol is ideal for systems that have dedicated serial signaling lines for each sensor or use a multiplexer to handle multiple sensors. The serial communications are compatible with many TTL serial implementations that support active-high logic levels using 0.0–3.6 V signal levels. When the sensor is first powered, it automatically makes measurements of the integrated transducers then outputs a response over the data line. Systems using this protocol control the sensor excitation to initiate data transfers from the sensor. This protocol is subject to change as METER improves and expands the line of digital sensors and data loggers.

The HYDROS 21 will omit the DDI Serial message when the SDI-12 address is nonzero or suppressed with the `ax01!` command. METER recommends suppressing the DDI Serial message when this signaling causes negative issues for a sensor measurement device.

NOTE: Out of the factory, all METER sensors start with SDI-12 address 0 and print out the startup string when power cycled.

DDI SERIAL TIMING

Table 11 lists the DDI Serial communication configuration.

Table 11 DDI Serial communication configuration

Baud Rate	1,200 bps
Start Bits	1
Data Bits	8 (LSB first)
Parity Bits	0 (none)
Stop Bits	1
Logic	Standard (active high)

At power up, the sensor will pull the data line high within 100 ms to indicate that the sensor is taking a reading (Figure 6). When the reading is complete, the sensor begins sending the serial signal out the data line adhering to the format shown in Figure 7. Once the data is transmitted, the sensor goes into SDI-12 communication mode. To get another serial signal, the sensor must be power cycled.

NOTE: Sometimes the signaling from the sensor can confuse typical microprocessor UARTs. The sensor holds the data line low while taking measurements. The sensor raises the line high to signal the logger that it will send a measurement. Then the sensor may take some additional measurements before starting to clock out the first data byte starting with a typical start bit (low). Once the first start bit is sent, typical serial timing is valid; however, the signal transitions before this point are not serial signaling and may be misinterpreted by the UART.

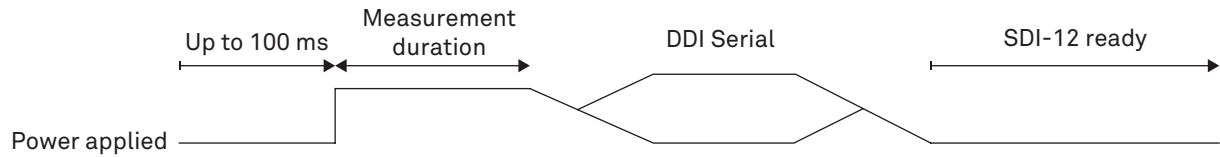


Figure 6 Data line DDI Serial timing

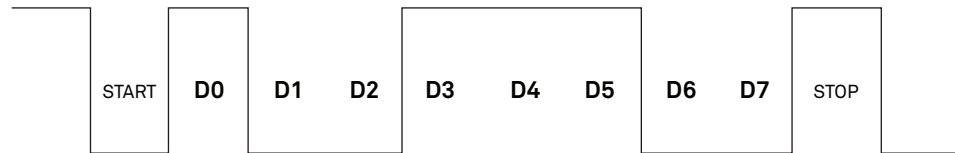


Figure 7 Example DDI Serial transmission of the character 9 (0x39)

DDI SERIAL RESPONSE

Table 12 details the DDI Serial response.

Table 12 G3 Drain Gauge DDI Serial response

COMMAND	RESPONSE
NA	<TAB><depth> <temperature> <electricalConductivity><CR><sensorType><Checksum><CRC>

NOTE: There is no actual command. The response is returned automatically upon power up. The values in this command are space delimited. As such, a + sign is not assigned between values and a - sign is only present if the value is negative.

DDI SERIAL CHECKSUM

These checksums are used in the continuous commands R3, and XR3, as well as the DDI Serial response. The legacy checksum is deprecated in favor of the CRC6 check character and may be ignored. The legacy checksum is computed using the characters after the sensor address (when used with the R3 or XR3 command) and includes the sensor identification character.

G3 Drain Gauge example input is `<TAB>146 21.9 1034 0<CR>eYg` and the resulting checksum output is `Y`.

```
uint8_t LegacyChecksum(const char * response)
{
    uint16_t length;
    uint16_t i;
    uint16_t sum = 0;

    // Finding the length of the response string
    length = strlen(response);

    // Adding characters in the response together
    for( i = 0; i < length; i++ )
    {
        sum += response[i];
        if(response[i] == '\r')
        {
            // Found the beginning of the metadata section of the response
            break;
        }
    }

    // Include the sensor type into the checksum
    sum += response[++i];

    // Convert checksum to a printable character
    sum = sum % 64 + 32;

    return sum;
}
```

G3 DRAIN GAUGE

The more robust CRC6, if available, utilizes the CRC-6-COMA2000-A polynomial with the value 48 added to the results to make this a printable character and is computed from the start of the transmission to the legacy checksum character, excluding the sensor address.

G3 Drain Gauge CRC6 checksum example input is `<TAB>146 21.9 1034 0<CR>eYg` and the resulting checksum output is `g`.

```
uint8_t CRC6_Offset(const char *buffer)
{
    uint16_t byte;
    uint16_t i;
    uint16_t bytes;
    uint8_t bit;
    uint8_t crc = 0xfc; // Set upper 6 bits to 1's

    // Calculate total message length—updated once the meta data section is found
    bytes = strlen(buffer)

    // Loop through all the bytes in the buffer
    for(byte = 0; byte < bytes; byte++)
    {
        // Get the next byte in the buffer and XOR it with the crc
        crc ^= buffer[byte];

        // Loop through all the bits in the current byte
        for(bit = 8; bit > 0; bit--)
        {
            // If the uppermost bit is a 1...
            if(crc & 0x80)
            {
                // Shift to the next bit and XOR it with a polynomial
                crc = (crc << 1) ^ 0x9c;
            }
            else
            {
                // Shift to the next bit
                crc = crc << 1;
            }
        }
        if(buffer[byte] == '\r')
        {
            // Found the beginning of the meta data section of the response
            // both sensor type and legacy checksum are part of the crc6
            // this requires only two more iterations of the loop so reset
            // "bytes"
            // bytes is incremented at the beginning of the loop, so 3 is added
            bytes = byte + 3;
        }

        // Shift upper 6 bits down for crc
        crc = (crc >> 2);

        // Add 48 to shift crc to printable character avoiding \r \n and !
        return (crc + 48);
    }
}
```



G3 DRAIN GAUGE

CUSTOMER SUPPORT

NORTH AMERICA

Customer service representatives are available for questions, problems, or feedback Monday through Friday, 7:00 am to 5:00 pm Pacific time.

Email: support.environment@metergroup.com
sales.environment@metergroup.com

Phone: +1.509.332.5600

Fax: +1.509.332.5158

Website: metergroup.com

EUROPE

Customer service representatives are available for questions, problems, or feedback Monday through Friday, 8:00 to 17:00 Central European time.

Email: support.europe@metergroup.com
sales.europe@metergroup.com

Phone: +49 89 12 66 52 0

Fax: +49 89 12 66 52 20

Website: metergroup.de

If contacting METER by email, please include the following information:

Name	Email address
Address	Instrument serial number
Phone number	Description of problem

NOTE: For products purchased through a distributor, please contact the distributor directly for assistance.

REVISION HISTORY

The following table lists document revisions.

Revision	Date	Compatible Firmware	Description
00	4.2022	5.03	Initial G3 Drain Gauge release.